

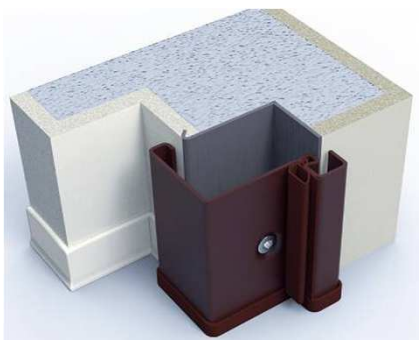
# SECURITY LINE DOORS

## STEEL FRAMES SOLUTIONS

**DI.BI. PORTE BLINDATE SRL**

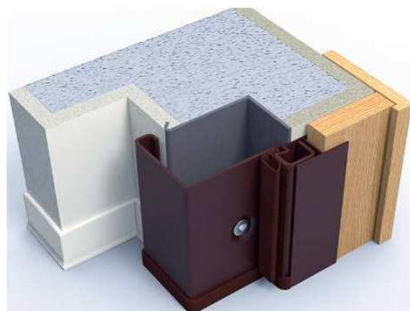
Via Einaudi, 2  
61032 Fano (PU)  
Tel. +39 07218191  
Fax +39 0721855460  
info@dibigroup.com  
[www.dibigroup.com](http://www.dibigroup.com)

# STEEL FRAMES SOLUTIONS



## Solution n° 1

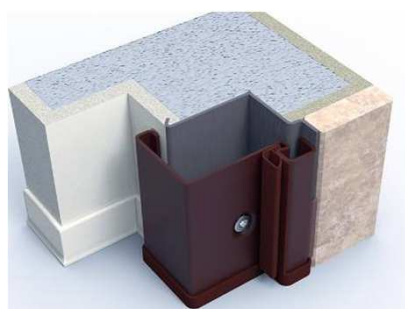
COD.	DESCRIPTION	PRICE
TL01/...	STANDARD ONE OR DOUBLE LEAF FRAME	<b>STD</b>
CT1A/M	Standard Subframe for One leaf door (up to 100x230)	<b>72,21</b>
CT1A/M	Out of standard One leaf Subframe (over 100x230)	<b>115,54</b>
CT2A/M	Subframe for Standard Double leaf door	<b>115,54</b>



## Solution n° 2

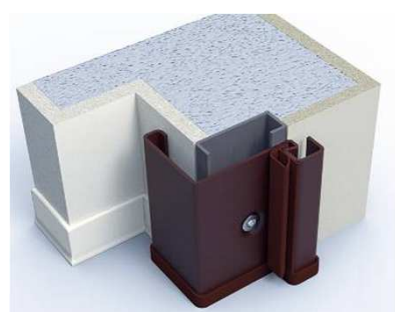
COD.	DESCRIPTION	PRICE
TL02/...	STANDARD ONE OR DOUBLE LEAF FRAME	<b>STD</b>
CT1A/M	Standard Subframe for One leaf door (up to 100x230)	<b>72,21</b>
CT1A/M	Out of standard One leaf Subframe (over 100x230)	<b>115,54</b>
CT2A/M	Subframe for Standard Double leaf door	<b>115,54</b>

Door extension lining prices available on Finishing panels Price list



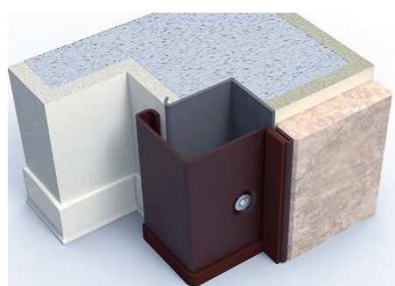
## Solution n° 3

COD.	DESCRIPTION	PRICE
TL03/...	STANDARD ONE OR DOUBLE LEAF FRAME	<b>STD</b>
CT(xxx)/M	Subframe Type "2" for Standard 1 leaf doors	<b>149,53</b>
CT(xxx)/M	Subframe Type "2" for Out of Standard 1 leaf doors	<b>179,63</b>
CT(xxx)/M	Subframe Type "2" for Standard 2 leaf doors	<b>178,55</b>
CTE02/M	Subframe Type "2" for Out of Standard 2 leaf doors	<b>208,69</b>



## Solution n° 4

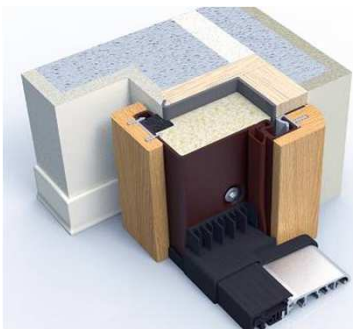
COD.	DESCRIPTION	PRICE
TL04/...	STANDARD ONE OR DOUBLE LEAF FRAME	<b>STD</b>
CT(xxx)/M	Subframe Type "3" REDUCED for Standard 1 leaf doors	<b>149,53</b>
CTE01/M	Subframe Type "3" REDUCED for Out of Standard 1 leaf doors	<b>179,63</b>
CT(xxx)/M	Subframe Type "3" REDUCED for Standard 2 leaf doors	<b>178,55</b>
CTE02/M	Subframe Type "3" REDUCED for Out of Standard 2 leaf doors	<b>208,69</b>



## Solution n° 5 - MAX HEIGHT 2300

COD.	DESCRIPTION	PRICE
TL05/...	Extra cost for frame and subframe with reduced extension	<b>145,60</b>

# IRON FRAMES SOLUTIONS

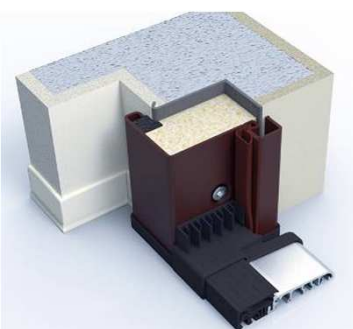


## Solution n° 6 - MAX. HEIGHT 2300

COD.	DESCRIPTION	PRICE
TL06/1A	STANDARD ONE OR DOUBLE LEAF FRAME	<b>STND</b>
CTL/1A	ONE LEAF SUBFRAME WITH WOOD FINISHES	<b>272,21</b>
CTL/2A	DOUBLE LEAF SUBFRAME WITH WOOD FINISHES	<b>334,58</b>
SUPTME/..	Inside or outside flat panel-fixing frames	<b>each 80</b>
SUPTME/..	Inside or Outside panel-fixing frame lacquered in RAL colour (of choice)	<b>each 120</b>
SUPTME/..	Outside only panel-fixing frame in Polymer*	<b>160,00</b>
SOGTT/1A	WATERTIGHT BREAK THRESHOLD FOR ONE LEAF**	<b>145,60</b>

\* CONTACT COMPANY FOR AVAILABLE COLOURS

\*\*ONLY FOR WATERTIGHT BREAK THRESHOLD SUBFRAME, THAT IS 2 CM HIGHER.

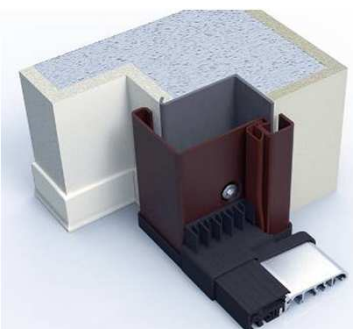


## Solution n° 6a

COD.	DESCRIPTION	PRICE
TL06A	STANDARD FRAME FOR SOUND LINE***	<b>STND</b>
SOGTT/1A	THERMAL THRESHOLD FOR 1 LEAF**	<b>145,60</b>
CT1A/M	Standard subframe for standard 1 leaf doors	<b>72,21</b>
CTE01/M	Standard subframe for out of standard 1 leaf doors	<b>145,60</b>

\*\*ONLY FOR WATERTIGHT BREAK THRESHOLD SUBFRAME, THAT IS 2 CM HIGHER.

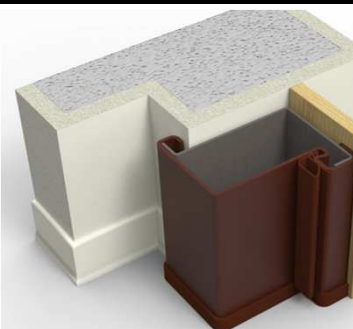
\*\*\*EXCLUDING SOUND JUNIOR



## Solution n° 6b

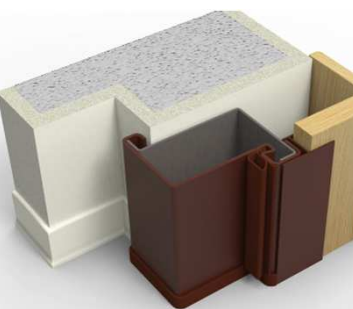
COD.	DESCRIPTION	PRICE
TL06B/...	STANDARD ONE OR DOUBLE LEAF FRAME	<b>STND</b>
SOGTT/1A	WATERTIGHT BREAK THRESHOLD FOR ONE LEAF**	<b>145,60</b>
SOGTT/2A	WATERTIGHT BREAK THRESHOLD FOR DOUBLE LEAF**	<b>291,20</b>
CT1A/M	Standard subframe for standard 1 leaf doors	<b>72,21</b>
CTE01/M	Standard subframe for out of standard 1 leaf doors	<b>72,21</b>
CT2A/M	Standard subframe for standard 2 leaf doors	<b>115,54</b>
CTE02/M	Standard subframe for out of standard 2 leaf doors	<b>115,54</b>

\*\*ONLY FOR WATERTIGHT BREAK THRESHOLD SUBFRAME, THAT IS 2 CM HIGHER.



## Solution n° 13 - MAX HEIGHT 2300

COD.	DESCRIPTION	PRICE
TL13/1A	BOX-SHAPED 1 LEAF FRAME	<b>128,00</b>
TL13/2A	BOX-SHAPED 2 LEAF FRAME	<b>155,00</b>
MOSTR	OUTSIDE PANEL-FIXING FRAMES	<b>74,21</b>

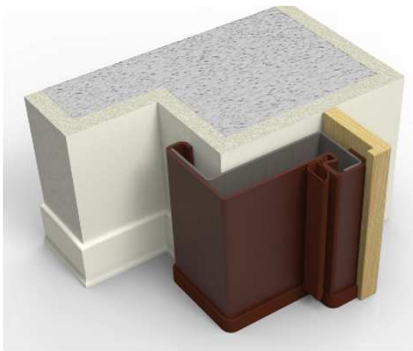


## Solution n° 14 - MAX HEIGHT 2300

COD.	DESCRIPTION	PRICE
TL14/1A	BOX-SHAPED 1 LEAF FRAME	<b>128,00</b>
TL14/2A	BOX-SHAPED 2 LEAF FRAME	<b>155,00</b>
MOSTR	OUTSIDE PANEL-FIXING FRAMES	<b>74,21</b>

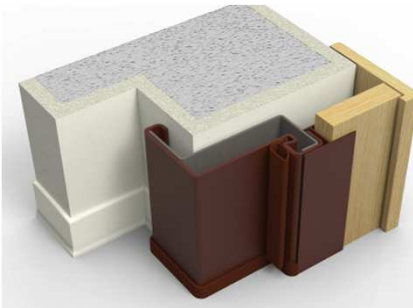
Door extension lining prices available on Finishing panels Price list

# IRON FRAMES SOLUTIONS



## Solution n° 15 - MAX HEIGHT 2300

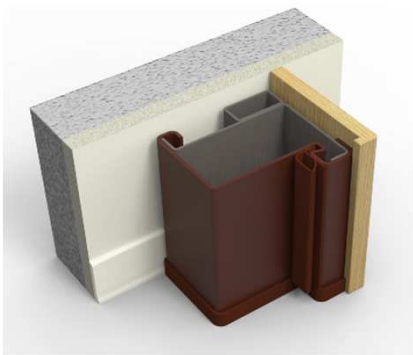
COD.	DESCRIPTION	PRICE
TL15/1A	REDUCED BOX-SHAPED 1 LEAF FRAME	<b>128,00</b>
TL15/2A	REDUCED BOX-SHAPED 2 LEAF FRAME	<b>155,00</b>
MOSTR	OUTSIDE PANEL-FIXING FRAMES	<b>74,21</b>



## Solution n° 15bis - MAX HEIGHT 2300

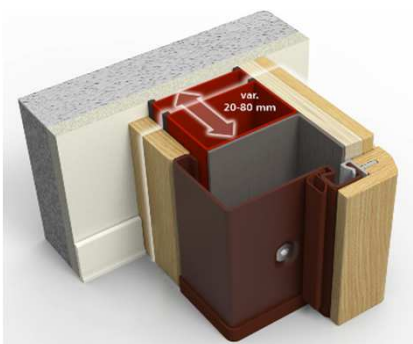
COD.	DESCRIPTION	PRICE
TL15B/1A	REDUCED BOX-SHAPED 1 LEAF FRAME	<b>128,00</b>
TL15B/2A	REDUCED BOX-SHAPED 2 LEAF FRAME	<b>155,00</b>

Door extension lining prices available on Finishing panels Price list



## Solution n° 16 - MAX HEIGHT 2300

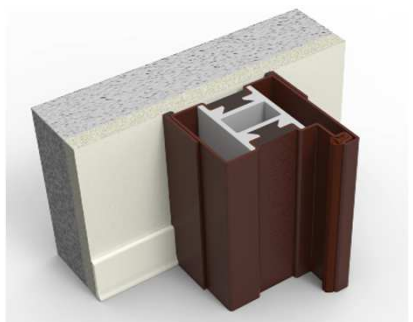
COD.	DESCRIPTION	PRICE
TL16/1A	BOX-SHAPED 1 LEAF FRAME	<b>193,00</b>
TL16/2A	BOX-SHAPED 2 LEAF FRAME	<b>220,00</b>
MOSTR	OUTSIDE PANEL-FIXING FRAMES	<b>74,21</b>



## Solution n° 17 - MAX HEIGHT 2300

COD.	DESCRIPTION	PRICE
TL17/1A/20	BOX-SHAPED 1 LEAF FRAME WITH 20 EXTENTION LINING	<b>193,00</b>
TL17/1A/40	BOX-SHAPED 1 LEAF FRAME WITH 40 EXTENTION LINING	<b>213,00</b>
TL17/1A/60	BOX-SHAPED 1 LEAF FRAME WITH 60 EXTENTION LINING	<b>233,00</b>
TL17/1A/80	BOX-SHAPED 1 LEAF FRAME WITH 80 EXTENTION LINING	<b>253,00</b>
TL17/2A/20	BOX-SHAPED 2 LEAF FRAME WITH 20 EXTENTION LINING	<b>220,00</b>
TL17/2A/40	BOX-SHAPED 2 LEAF FRAME WITH 40 EXTENTION LINING	<b>247,00</b>
TL17/2A/60	BOX-SHAPED 2 LEAF FRAME WITH 60 EXTENTION LINING	<b>274,00</b>
TL17/2A/80	BOX-SHAPED 2 LEAF FRAME WITH 80 EXTENTION LINING	<b>301,00</b>
MOSTR/INT	INSIDE COVERING PROFILES	<b>74,21</b>

FOR OUTSIDE PANEL FIXING FRAME REFER TO SPECIAL SECTION ON EXTENSION LINING CHAPTER



## Solution n° 18 - MAX HEIGHT 2300

COD.	DESCRIPTION	PRICE
TL18/1A	BOX-SHAPED 1 LEAF FRAME WITH THERMAL BREAK	<b>900,00</b>
TL18/2A	BOX-SHAPED 2 LEAF FRAME WITH THERMAL BREAK	<b>1.100,00</b>

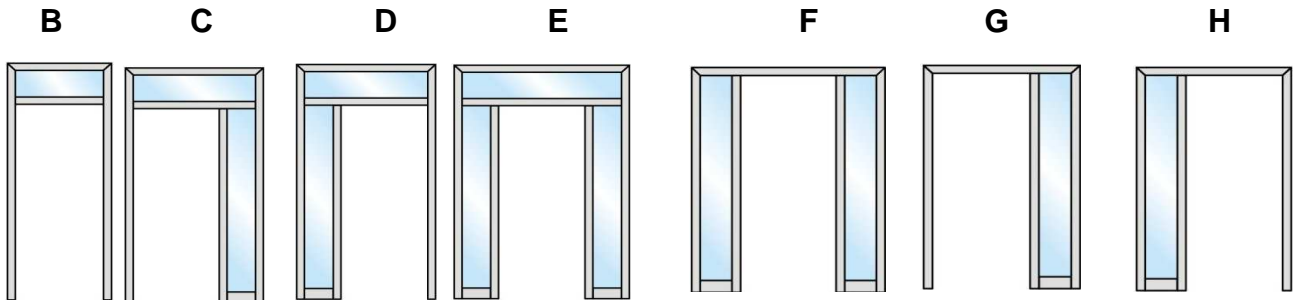
# SECURITY LINE DOORS

STEEL SIDELIGHTS AND TOP WINDOWS

# SIDELIGHT AND TOP WINDOW

## POSSIBLE SOLUTIONS WITH STEEL FRAME

### COSTRUCTION CODES - OUTSIDE VIEW



### 1 LEAF

PRICE INCLUSIVE OF THE STRUCTURE ONLY							
	B*	C**	D**	E**	F**	G**	H**
PRICE	292,67	1.502,28	1.502,28	2.448,16	1.613,56	845,73	845,73

### 2 LEAVES

PRICE INCLUSIVE OF THE STRUCTURE ONLY							
	B**	C**	D**	E**	F**	G**	H**
PRICE	330,95	1.727,62	1.727,62	2.815,38	1.855,59	972,59	972,59

The glasses are available in the following colours:  
Transparent, Bronze, Smoky, Satin White, Satin Bronze, Milk White, Reflective.

### GLAZING 30 mm.thick

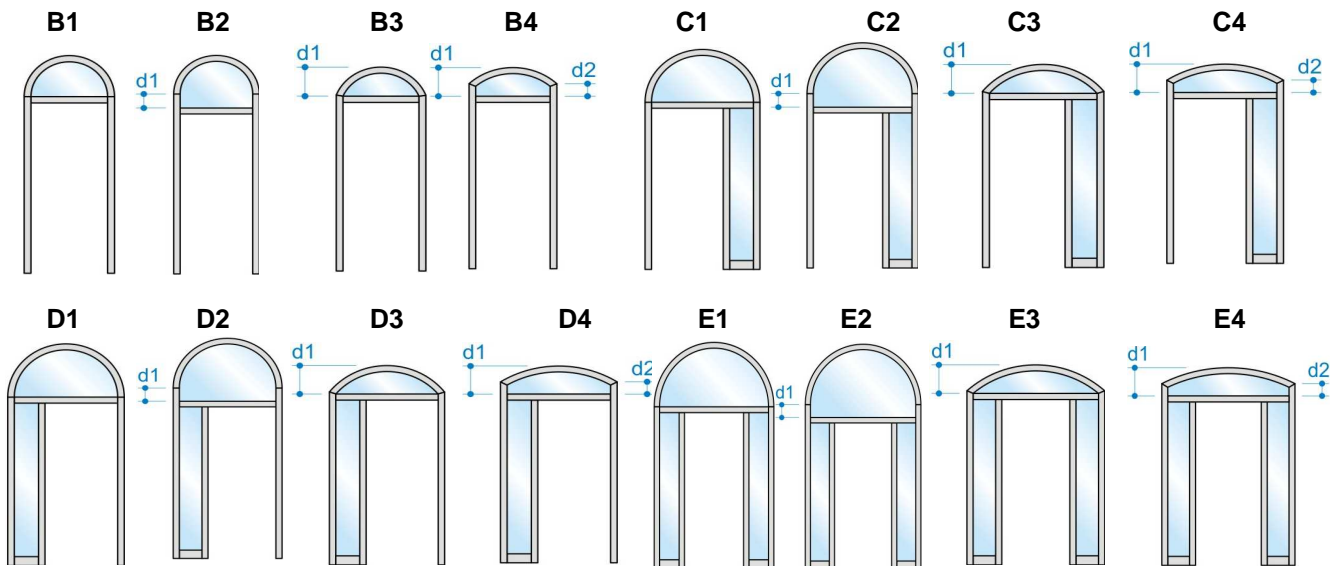
Glasses TOP WINDOW				Glasses SIDELIGHT	
	H. UP TO 1000	H. UP TO 1500	OVER 1500	H. UP TO 450	H. UP TO 700
	PRICE	PRICE	PRICE	PRICE	PRICE
HEIGHT UP TO 600 mm	270,42	320,98	410,98	410,69	550,42
HEIGHT OVER 600 mm	540,84	641,96	821,96		

NOTE: The structure of sidelight + top window must always have one of two dimensions NOT exceeding 2200 mm.

* Door subframe is out of standard.	Euro	152,82
** Door subframe has out of standard two leaves.	Euro	200,30

# SIDELIGHT AND TOP WINDOW

## COSTRUCTION CODES - OUTSIDE VIEW



### 1 LEAF

#### PRICE INCLUSIVE OF THE STRUCTURE ONLY

	B1-B2*	B3-B4*	C1-C2-D1-D2**	C3-C4-D3-D4**	E1-E2**	E3-E4**
PRICE	1.640,00	1.833,00	2.961,00	3.152,00	4.158,00	4.349,00

### 2 LEAVES

#### PRICE INCLUSIVE OF THE STRUCTURE ONLY

	B1-B2**	B3-B4**	C1-C2-D1-D2**	C3-C4-D3-D4**	E1-E2**	E3-E4**
PRICE	1.809,00	2.000,00	3.129,00	3.320,00	4.326,00	4.517,00

### GLAZING 30 mm.thick

Glasses TOP WINDOW				Glasses SIDELIGHT	
	H. UP TO 1000	H. UP TO 1500	OVER 1500	H. UP TO 450	H. UP TO 700
	PRICE	PRICE	PRICE	PRICE	PRICE
HEIGHT UP TO 600 mm	270,42	320,98	410,98	410,69	550,42
HEIGHT OVER 600 mm	540,84	641,96	821,96		

NOTE: The structure of side light + top window must always have one of two dimensions NOT exceeding 2200 mm.

NOTE: For doors with arc-shaped top window, subframe, frame and the door leaf are delivered in one solution.

NB: The hinge is always put on the wall side for the solutions with sidelight only.

\* Door subframe is out of standard.

Euro 152,82

\*\* Door subframe has 2 leaves out of standard.

Euro 200,30